



Melbury Court, W8





## Melbury Court, W8

£4,950,000 | Leasehold, 124 years remaining

2726 Sq Ft | 253 Sq M

4 Bedrooms. 1 Reception Room. 1 Dining Room

3 Bathrooms. 1 Utility Room. 1 Cloakroom.

### Features

24-Hour Porter

Gated Entrance

Off-street parking on a first come first basis

Abundant natural light throughout

### Additional Information

Council Tax Band

H

EPC

C

Service Charge

Approx £27,000 per annum

Council

Kensington & Chelsea









## The Property

Situated on the fourth floor of the prestigious Melbury Court, this beautifully presented lateral apartment offers over 2,500 sq ft of well-proportioned living space arranged across a single floor. The elevated position ensures excellent natural light throughout, complemented by attractive open views, creating a calm and airy atmosphere. Residents benefit from 24-hour portorage and security, along with a secure gated entrance and access to limited off-street parking on a first come, first served basis.

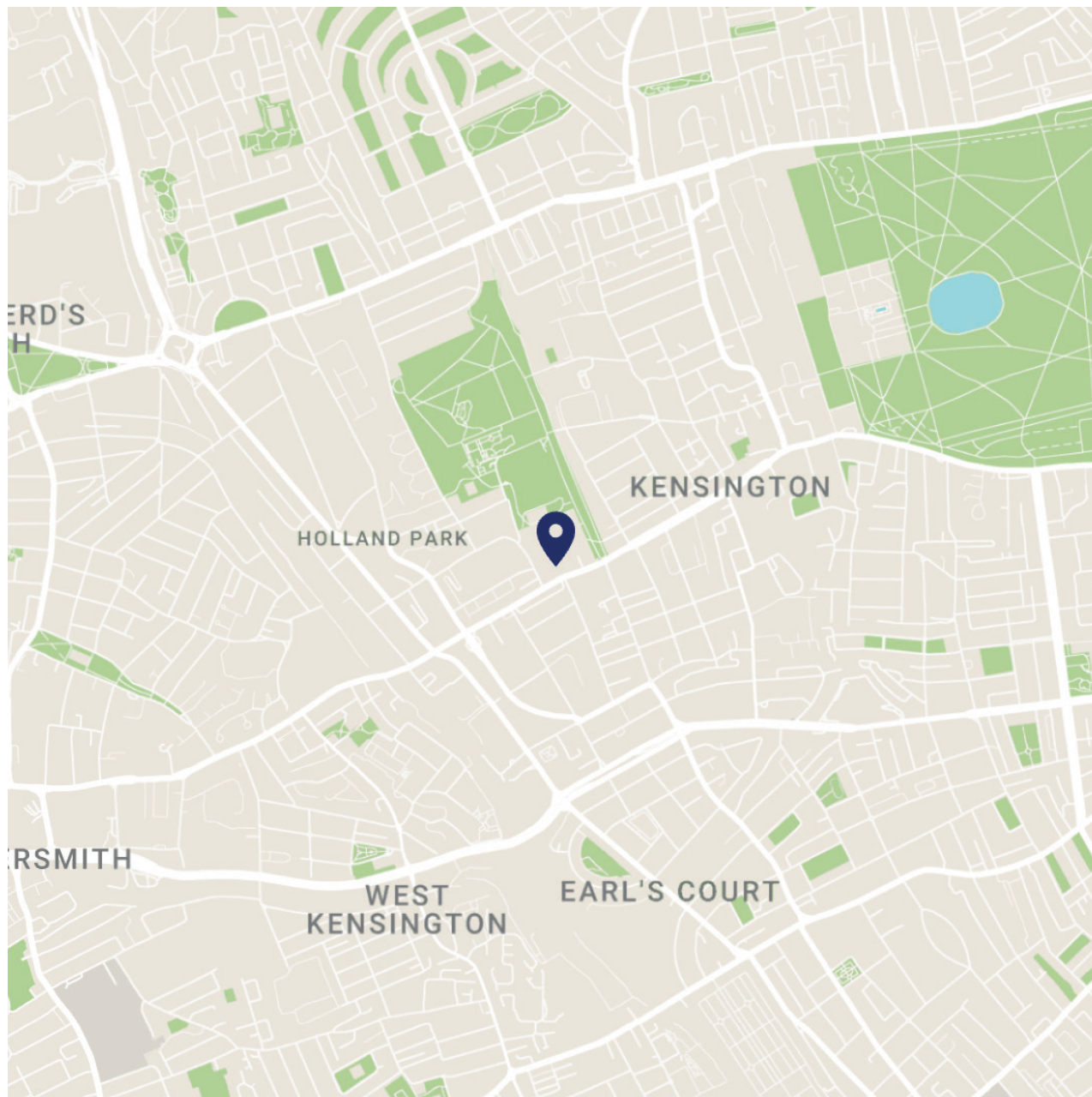






## The Location

Melbury Court occupies a highly sought-after position in W8, moments from the open green spaces of Holland Park. This prestigious address offers a peaceful residential setting while remaining exceptionally well connected, with a wide selection of shops, restaurants and amenities nearby, as well as excellent transport links into central London. The blend of tranquillity, convenience and architectural prestige makes Melbury Court one of the area's most desirable mansion blocks.



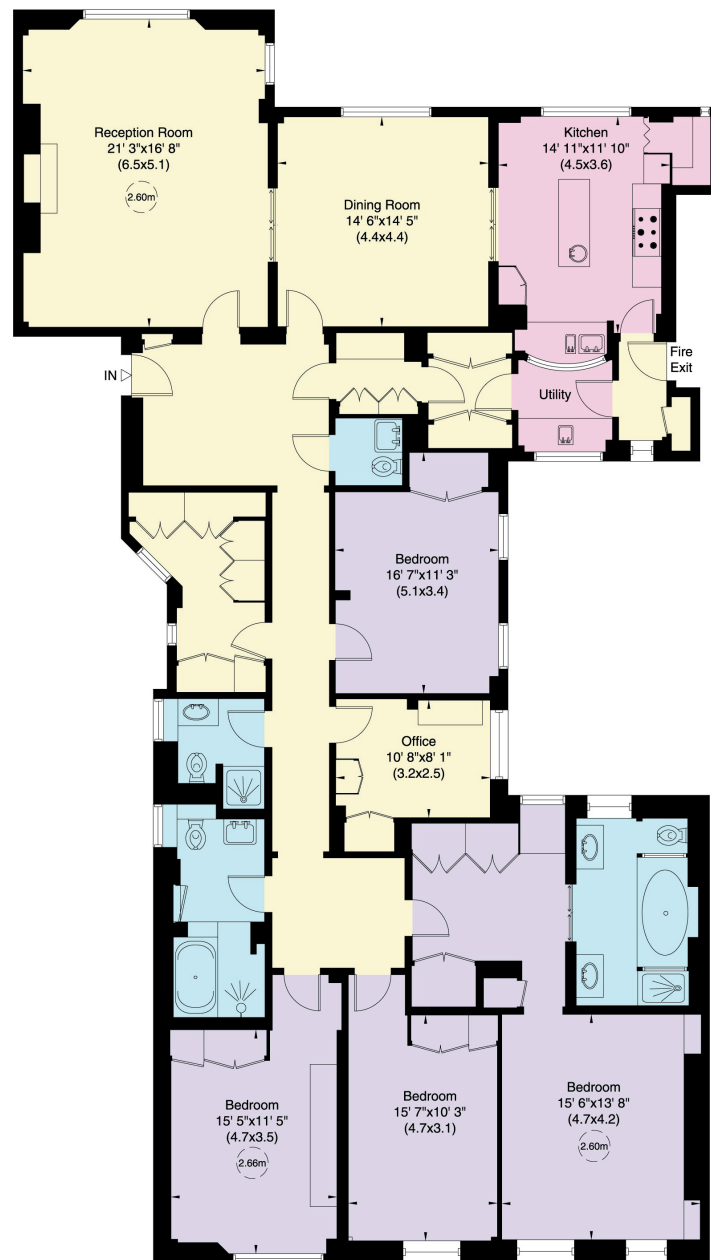


# Melbury Court, W8

Approximate Gross Internal Area

253 sq m (2726 sq ft)

Not to Scale, for identification only



Fourth Floor

---

## Selling Agent

Johnny Fuller

+44 (0)7967 555 653

[johnny@sflproperty.co.uk](mailto:johnny@sflproperty.co.uk)

---

## Contact Us

+44 (0)20 7589 2970

[sales@sflproperty.co.uk](mailto:sales@sflproperty.co.uk)

---

For guidance only and must not be relied upon as a statement of fact.

All measurements and areas are approximate only (and have been prepared in accordance with the current edition of the RICS Code of Measuring Practice).





## CONTACT US

---

020 7589 2970

[sales@sflproperty.co.uk](mailto:sales@sflproperty.co.uk)

---

16A Adam & Eve Mews  
Kensington  
London  
W8 6UJ