



Adam & Eve Mews, W8





## Adam & Eve Mews, W8

£4,950,000 | Freehold

2,302 Sq Ft | 213 Sq M

5 Bedrooms. 3 Bathrooms. 1 Reception.

### Features

Off Street Parking

Kitchen/Dining Room

Two Terraces

Garden

Office/Studio

### Additional Information

Council Tax Band

H

EPC

C

Council

Kensington & Chelsea





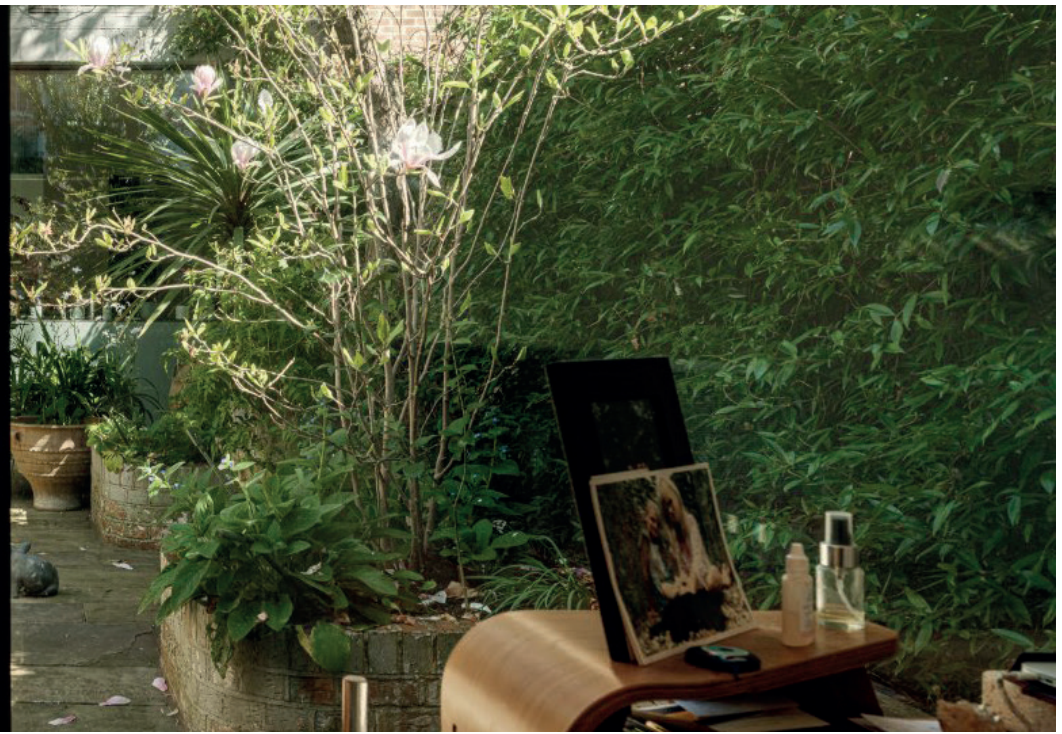




## The Property

Originally built around 1901 as an artist's studio, this unique, virtually detached freehold house offers immense charm and style, with windows on three sides filling the space with natural light. The ground floor was extensively modernised in 2017, featuring floor-to-ceiling sliding glass doors opening onto a courtyard garden and a striking studio with matching doors. A new Bulthaup kitchen, oak flooring, and LED lighting enhance the breathtaking kitchen/living area, which boasts three-metre ceilings and garden views. Upstairs are four to five bedrooms, two bathrooms, and a shower room. The principal suite includes a dressing room, ensuite, and garden views, while two east-facing bedrooms enjoy private terraces. The courtyard garden, also redesigned in 2017 with reclaimed York stone and a mature planting scheme by The Land Gardeners, offers a tranquil, light-filled retreat.









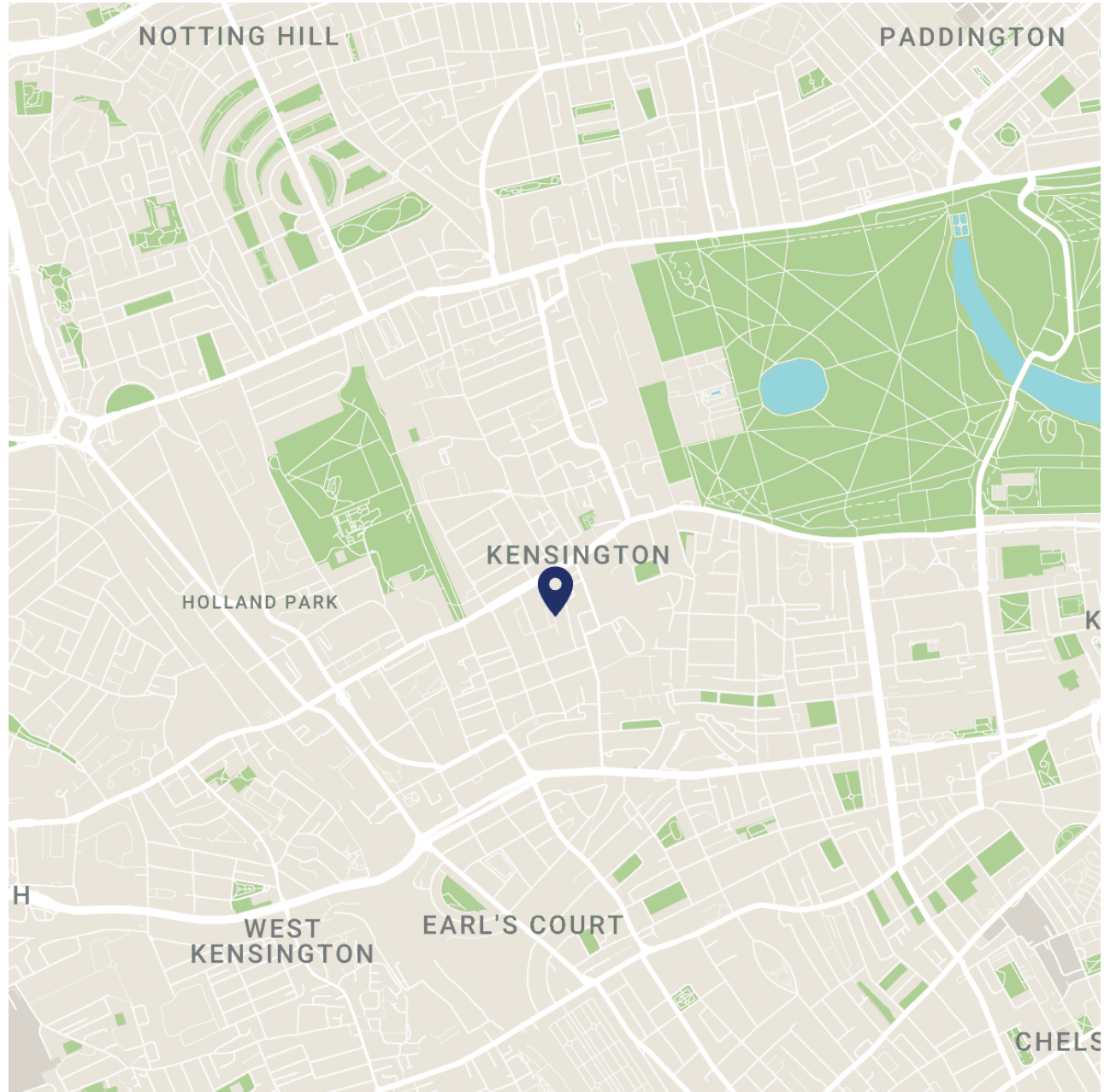






## Location

Adam & Eve Mews is a highly sought-after cobbled street in one of London's most prestigious areas. Discreetly set behind High Street Kensington, it leads south through a charming archway toward the Stratford and Abingdon Village area. Quiet yet moments from shops, cafés, bars, and acclaimed restaurants, it perfectly blends village charm with city convenience. The property is a short walk from both Holland Park and Kensington Gardens and benefits from excellent transport links. Nearby schools within walking distance include Thomas's Kensington, St Mary Abbot's, Iverna Gardens, St Barnabas/St Philips, and Holland Park.







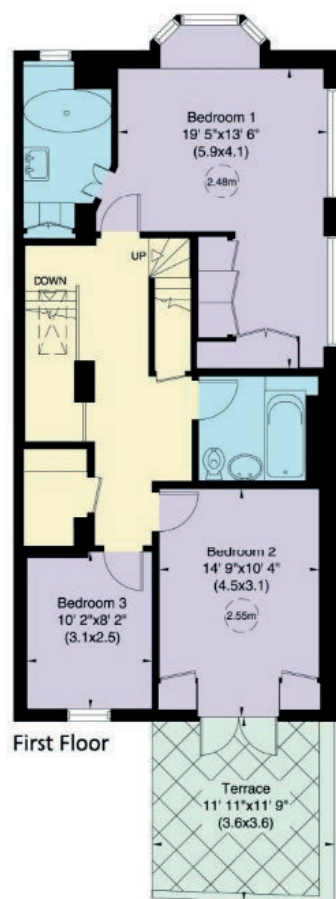
## Adam and Eve Mews, W8

Approximate Gross Internal Area

214 sq m (2302 sq ft) Including Under 1.5m and Office/Studio

187 sq m (2008 sq ft) Excluding Under 1.5m and Office/Studio

Not to Scale, for identification only



## Selling Agent

Johnny Fuller

+44 (0)7967 555653

johnny@sflproperty.co.uk

## Contact Us

+44 (0)20 7589 2970

sales@sflproperty.co.uk

For guidance only and must not be relied upon as a statement of fact.

All measurements and areas are approximate only (and have been prepared in accordance with the current edition of the RICS Code of Measuring Practice).







## CONTACT US

---

020 7589 2970

[sales@sflproperty.co.uk](mailto:sales@sflproperty.co.uk)

---

16A Adam & Eve Mews  
Kensington  
London  
W8 6UJ